



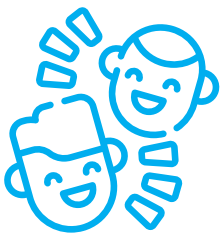
ATTENTION

IF YOU SEE



- › Another pupil struggling to make friends
- › Another pupil being bullied
- › Another pupil alone at break or lunchtime
- › Another pupil sitting alone
- › Another pupil who is not part of the 'in' crowd
- › Someone who seems shy or lonely

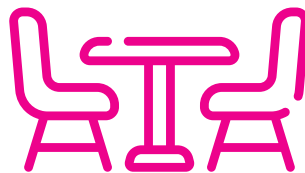
BE A FRIEND



Smile at them



Say 'Hello'



**Ask if they'd like
to sit with you**



**Include them
in any activity**

You never know what they might be going through inside or outside of school and your kindness can make a huge difference.

#MakeADifference #KindnessMatters

BulliesOut[®]
www.bulliesout.com